

# SHORELINE YACHT CLUB

Presents the

## 2017 SHARKIE

Predicted Log / Cruiser Navigation Contest

Friday, June 9<sup>th</sup>, 2017



SHARKIE PERPETUAL TROPHY

## History of the SHARKIE and BCYC INVITATIONAL

### Predicted Log / Cruiser Navigation Contests

Back in the 1970s, Shark Island Yacht Club was the predominate force in Predicted Log Racing in the Newport Beach area. BCYC indicated interest in participating and the SCCA dispatched a few Skippers from the area to host seminars at their Club and help them develop a cadre of Predicted Log Racing Skippers. In order to help develop these prospective Skippers, BCYC was key in creating the Orange Coast Predicted Log group whose primary focus was on seminars and weekend training races. This effort was successful and produced a number of fine contestants out of BCYC. In the early eighties, the majority of the SCCA Skippers hailed from Shark Island Yacht Club and Del Rey Yacht Club with Shark Island Yacht Club taking the Simonson top club Season Points Trophy regularly. Shark Island Yacht Club sponsored the Shark Island Yacht Club (Invitational?), which was a major Brugman contest and was run a week or two before the Fourth of July. When feeder races were created, the Four Winds Yacht Club created the Sharkie as a feeder to the Shark Island Yacht Club race. At that time we had a log racer named Dave Ritchie who was quite a character. When he won the Sharkie and found that it had no Perpetual Trophy, he immediately went out and bought one. Of course, his name was clearly shown as the first winner, although I believe it had been run once or twice before. Incidentally, that perpetual was later used for the Two Harbors race until recently when the yacht club currently sponsoring that race replaced it.

Things changed at Shark Island Yacht Club; their membership began to dwindle and the club soon closed its doors. I believe that it was at this time that the BCYC offered to replace the Shark Island Yacht Club trophy race with one of their own. The contest was named the BCYC Invitational (although it has always been open to all and therefore is not really an "invitational"). It has been run as the primary Brugman contest and has retained the approximate same date as the Shark Island Yacht Club contest. Typically, by that time of year, the weather off Newport Beach is becoming quite nice and the contest has always been very popular with our Skippers. Further, BCYC has established a reputation for hosting a first class event. SCCA is pleased and proud to have BCYC host this classic and important race.

# SHARKIE 2017

SPONSORED BY

## SHORELINE YACHT CLUB

Contest date: ----- Friday; June 9<sup>th</sup>, 2017

Sanctioned by: ----- SCCA & NACA

Sponsored by:----- Shoreline Yacht Club

Eligibility: ----- All eligible members of SCCA member yacht clubs.

Points for: ----- SCCA Spring Series, Top Ten, Bathke, Simonson, NACA,  
Lurie First-Year Racer

Trophies: ----- Sharkie Perpetual; Keeper Trophies per SCCA Rules.

Rules: ----- SCCA Contest Rules as amended Feb. 18<sup>th</sup>, 2015.

Skipper's meeting: --- None

Logs: ----- Use SCCA latest revision. Predicted log sheet will be sealed in an envelope prior to the contest start and provided to the observer. Turn in the actual log sheet with the predictions and official timepiece to the scorer's boat, Loon's Call, after the contest within one-half hour after docking but no later than 1400.

Race Committee: ----Ken Griffing @ Hm: 626-333-0513 or Cell: 626-483-8460.

Committee boat: -----Loon's Call

Scorer:----- Ken Griffing @ Hm: 626-333-0513 or Cell: 626-483-8460.

Observers:----- To be provided by skipper per SCCA Rules.

Berthing:----- Contact BCYC @ 949-644-9530 by June 3<sup>rd</sup>, 2017.

See:----- "Reservations" page of BCYC race instructions for details of requests for berthing and dinners.

Awards: ----- Following dockside cocktail party at BCYC, 1630 on June 9<sup>th</sup>.

Please:----- Bring an hors d'oeuvre to share.

Dinner:----- Available at BCYC dining room, bar, or local restaurants.

Postponement: ----- Contact Committee in the event of inclement weather.

# Sharkie 2017

## The Course

**GPS SOG (speed over ground) and speed through the water is allowed in this contest.**

Start: ----- Range on LB breakwater & Fl G 6s 43ft 5M "1" HORN -----50 yards starboard

CP-1: --- 33° 42.0' N / 118° 06.0' W

CP-2: --- Northeast corner of Oil Platform EVA ----- 100 to 200 yards starboard

**(NE corner of EVA is approximately 33° 39.716' N / 118° 03.710' W... NOT as depicted on chart.)**

CP-3: ---- Range on Huntington Beach Pier -----300 yards MINIMUM to 400 yards MAXIMUM

CP-4:----- 33° 37.0' N / 117° 58.0' W

CP-5:----- 33° 36.0' N / 117° 56.0' W

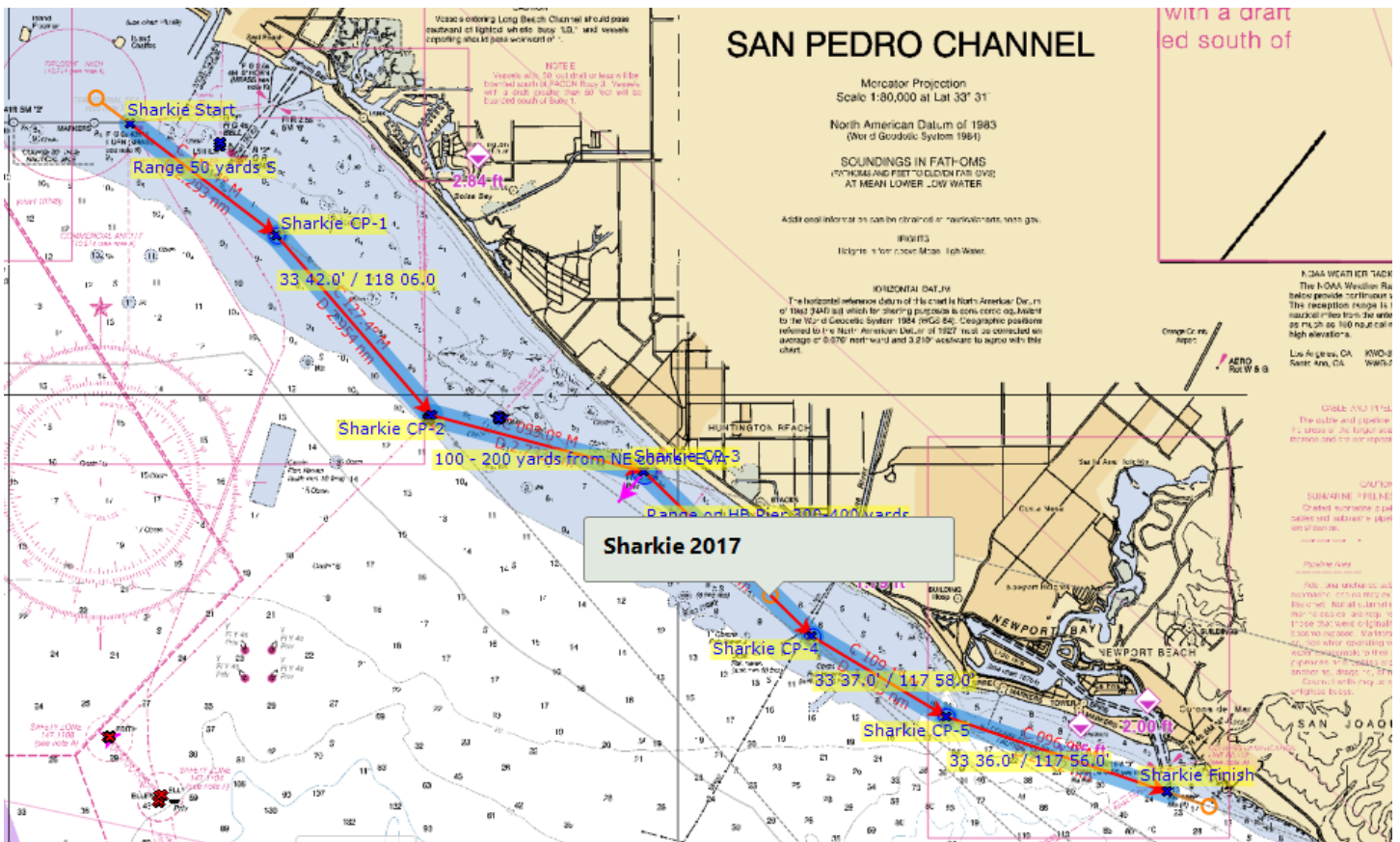
Finish:——RW "NWP" Mo (A), (Newport Bay entrance buoy) ----- Abeam as necessary for traffic

---

## Special Rules

1. - All equipment aboard the vessel may be used except that which is prohibited.
2. - Use of the following data from any source is prohibited:
  - a. - Clock time or elapsed time.
3. - The contest is an Open Log contest. During the contest the skipper may have access to all times recorded on the Actual Log.
4. - Official distance is 15.8 nautical miles. (Will vary depending on distance from marks)
5. - Start at skipper's discretion so as to turn in logs by 1400.
6. - **No** penalty for start time differences.
7. --Radio: Monitor VHF channel 71; skipper to announce when 5 minutes to start if other contestant vessels are in the vicinity of the start.
8. - Charts: Use charts 18746-40<sup>th</sup> Ed. corrected through 04/01/2016; 18749-44<sup>th</sup> Ed. corrected through 04/01/2017.
9. --Handicap **WILL NOT** be used in scoring.

# Friday; June 9<sup>th</sup>, 2017, SHARKIE route graphic:



# SOUTHERN CALIFORNIA CRUISER ASSOCIATION

Official Predicted Log Entry Form

Vessel: \_\_\_\_\_ FYI UHF: \_\_\_\_\_

SCCA Number: \_\_\_\_\_ NACA Number: \_\_\_\_\_ Regatta Date: \_\_\_\_\_

## PREDICTED LOG

Checkpoints ( no waypoints or blindpoints )	Predicted Clock Time		
	Hrs.	Mins.	Secs.
Start			
1			
2			
3			
4			
5			
6			
7			
8			

I am entering this regatta at my own risk and will save, hold harmless and indemnify the SOUTHERN CALIFORNIA CRUISER ASSOCIATION, and such other Club and/or Association that may be sponsoring, hosting, or sanctioning this regatta, together with their officers, directors, committees and members, from any and all liability or responsibility of any nature whatsoever for accidents, damage or injury to myself, my crew, my guests and my boat, and for any damage I or my boat might cause to any other boat, person or property, and I waive and relinquish any claim I might have for injury or damage to myself or my boat and against any such Association and/or Club and/or their officers, directors, committees, or members.

Signature: \_\_\_\_\_ Date: \_\_\_\_\_

**Skipper (print)** \_\_\_\_\_

Address \_\_\_\_\_

Email \_\_\_\_\_ Yacht Club \_\_\_\_\_

Home Phone \_\_\_\_\_ Cell Phone \_\_\_\_\_

Observer Name (Furnished) \_\_\_\_\_ (Assigned) \_\_\_\_\_

**First Year Duff/Dants Only:**

I certify that it has been less than 12 months since I participated in my first SCCA regatta.

Signature \_\_\_\_\_

(SCCA Form revised 09/12/13 by S/C Craig Ryan)

# SOUTHERN CALIFORNIA CRUISER ASSOCIATION

Official Observer Actual Log Form

Vessel: \_\_\_\_\_ FYI UHF: \_\_\_\_\_

(Observer to fill in gray areas:)

Actual Vessel Number Displayed: \_\_\_\_\_

## ACTUAL LOG

Checkpoints ( to be entered by Skipper )	Port or Stbd.	Yards Off	Predicted Start Time		
			Adjusted Start Time		
			Hrs.	Mins.	Secs.
Start					
1					
2					
3					
4					
5					
6					
7					
8					

Optional for Skipper:

I have calculated my error to be \_\_\_\_\_

Blind Point Predictions				
From C.P.#	To B.P.#	Elapsed Time		
		Hrs.	Mins.	Secs.

**Committee Use Only**

Watch Error (Seconds) \_\_\_\_\_ Fast  
 \_\_\_\_\_ Slow  
 \_\_\_\_\_ % Error

**Equipment checklist to be completed by Observer (Y or N)**

SCCA Burgee \_\_\_\_\_ YC Burgee \_\_\_\_\_ All clocks covered ? \_\_\_\_\_  
 Depth Sounder \_\_\_\_\_ VHF Radio \_\_\_\_\_ Chartplotter used? \_\_\_\_\_  
 GPS Used ? \_\_\_\_\_ If GPS used, are all the prohibited items on the GPS taped over? \_\_\_\_\_

Observer is to record all unusual occurrences, rule violations, etc., on reverse side. I have read the current SCCA rules and certify that I have abided by them.

Observer \_\_\_\_\_ Date \_\_\_\_\_

I have participated in this regatta in the true spirit of yachtmanship and have abided by all rules of the SCCA.

Skipper \_\_\_\_\_ Date \_\_\_\_\_

(SCCA Form revised 09/12/13 by S/C Craig Ryan)