



## LONG BEACH YACHT CLUB

Presents the

# 2016 SEASON OPENER

Cruiser Navigation Regatta

March 5, 2016



**This regatta kicks off the season in SCCA cruiser navigation regattas. Held in the relatively sheltered waters of the San Pedro Bay and Channel, it provides the year's first opportunity for power cruiser skippers to check out their vessels and refresh their skills at this exciting navigational challenge. Long Beach Yacht Club invites all members of Southern California Cruiser Association Yacht Clubs to participate in this Cruiser Navigation Regatta, also known as a Predicted Log Regatta.**

*The following is a reprint of an article written by SCCA S/C Tom Collins."*

## **EVOLUTION OF THE "SEASON OPENER"**

In 1947, a group of Predicted Log skippers who had been racing under the Southern California Yachting Association (SCYA) met at Ciro's restaurant on Santa Monica Boulevard and organized the Southern California Cruiser Association (SCCA). The intent was to create a separate organization whose primary emphasis was on power cruiser predicted log regattas rather than sailboat racing. King Brugman of Long Beach YC was named as the first Commodore and the newly formed SCCA sanctioned a handful of regattas each year.

The two predicted log regattas that had been run during the SCYA's Midwinter and Midsummer Regattas remained with SCYA. They were the Brittain and the Donaldson regattas, respectively. Later the Midsummer was dropped and the Donaldson trophy was moved to the Midwinter as the Class B trophy. The host club for the Midwinter log regatta alternated yearly between California and Long Beach Yacht Clubs. The entry fee for sailboats in the Midwinter ranged from a couple of bucks for the smallest class of sailboats to a very substantial fee for the largest seventy-plus foot sailboats. In the mid seventies discontent arose when the entry fee for the predicted loggers was set at the maximum charged for the largest sailboats.

After meetings between the SCYA and the SCCA failed to produce an acceptable resolution to the problem, SCCA withdrew from further participation in the SCYA Midwinter. A replacement regatta needed to be created to fill the void in the schedule and LBYC fleet captain Arnold Cowan proposed the Season Opener. Upon approval, he created the present trophy.

Interestingly, after the split, the Donaldson Trophy was retained by the SCCA and is now used for the Long Beach to San Diego skippers, which is elemental to the LBYC Craig Regatta.

The Season Opener Regatta typically runs in the sheltered waters of the San Pedro Bay and is a relatively short course that can easily be navigated on a Saturday morning. Skippers usually tie up after the regatta at the LBYC Long Dock for some enjoyable camaraderie. The Awards banquet Saturday evening is a favorite as skippers and crew get together to discuss the regatta and catch up on happenings since the last year's Season Closer. The LBYC Season Opener remains as one of the most popular of the SCCA regattas.

# LBYC - SEASON OPENER

## CRUISER NAVIGATION REGATTA

Saturday, March 5, 2016

- SPONSORED BY: Long Beach Yacht Club
- SANCTIONED BY: Southern California Cruiser Association  
North American Cruiser Association
- ELIGIBILITY: All eligible members of SCCA member clubs and per SCCA Rules.
- POINTS FOR: SCCA Brugman, Top Ten, Bathke, Simonson, Lurie, and Spring Series. North American Cruiser Association's season trophies.
- TROPHIES: Season Opener Perpetual Trophy.  
Keeper Trophies for: Top places overall.  
First Place, first year  
First-place Easy Entry
- RULES: SCCA latest rules. Download from: [SoCalCruiserAssociation.org](http://SoCalCruiserAssociation.org)
- LOG FORMS: SCCA latest version. Download from: [SoCalCruiserAssociation.org](http://SoCalCruiserAssociation.org)
- COMMITTEE: Chairman: Bobby Frazier H 562-439-0618  
W-562-594-9716  
Scorer: Tom Collins H/C 818-363-6292  
Committee Boat: Misty Sea VHF Channel 71
- SKIPPERS' MEETING: At 1830 Friday, March 4, in Skippers' Cove, LBYC.  
Starting times will be assigned. All skippers must be represented.
- OBSERVERS: Skippers are requested to furnish an observer. Additional observers will be supplied by LBYC on advance request.
- ACTUAL LOGS: To be turned in at the LBYC Long Dock no later than 1330. The Committee will check observer's clock at that time.
- BERTHING: Berthing will be assigned by LBYC to the extent available.  
Advance reservations are required.
- TROPHY PRESENTATION: No-host cocktails will commence at 1830. The trophy presentation dinner will follow at 1930. Reservations are required.  
(Blazers and ties are the traditional attire for this event.)

# COURSE - 2016 SEASON OPENER

Start:	Light, West Alamitos Bay Jetty, Fl G 2.5s 16ft 4M “1” BELL	Stbd 100 yards
C.P. 1:	Belmont Pier – as a range	Stbd 200 yards
W.P. 1:	Island Freeman NW corner	Port 100 yards
C.P. 2:	Light, Shoreline Marina Breakwater SW, Fl R 4s 4ft Priv	Stbd 100 yards
W.P. 2:	Buoy R “2” Fl R 4s	Stbd 50 yards
W.P. 3:	Crossing Pier J range lights Fl G 80ft & Fl G 64ft on heading 180T from W.P. 2	
C.P. 3:	“Radar Tower” (SE corner Pier J)	Stbd 100 yards
C.P. 4:	Light, Pier 400, Fl 4s 15ft 5M “B”	Stbd 100 yards
W.P. 4:	Inside Corner Middle Breakwater	Stbd 100 yards
C.P. 5:	Light, Breakwater - LONG BEACH LT, Fl 5s 50ft 14M HORN	Stbd 100 yards
C.P. 6:	East Measured Mile MARKERS - as a range	Stbd 100 yards
W.P. 5:	Island Chaffee E MARKER (Lt)	Port 100 yards
Finish:	Alamitos Bay E Entrance Jetty, as a range	Port 300 Yards

## SPECIAL INSTRUCTIONS

1. Easy-Entry level skippers may enter without submitting a Predicted Log – see attached.
2. This regatta will use a staggered start with the fastest vessel starting first and the slowest last. All vessels shall submit a predicted log showing a 0900 predicted starting time. Staggered starting times will be assigned at the skippers meeting.
3. Chart used to prepare regatta course: 18749, 44<sup>th</sup> edition. Official distance: 15.0 nm.
4. Regatta communications: use VHF channel 71
5. Skipper may call mark at waypoints and, if called, Observer shall record waypoint time on back of Actual Log.
6. Regatta will be scored without handicap.
7. All equipment aboard the vessel may be used except that which is prohibited.
8. Use of GPS is permitted including speed. No time information may be displayed. Cover any prohibited data display with opaque tape.
9. A chart plotter may be used to display an electronic chart. The vessel’s location may be displayed. No time (present, TTG, ETA, etc.) shall be displayed.
10. This is an Open Log regatta. Skipper may view the Actual Log during the regatta.

## March 5 2016, LBYC Season Opener Regatta - Easy Entry

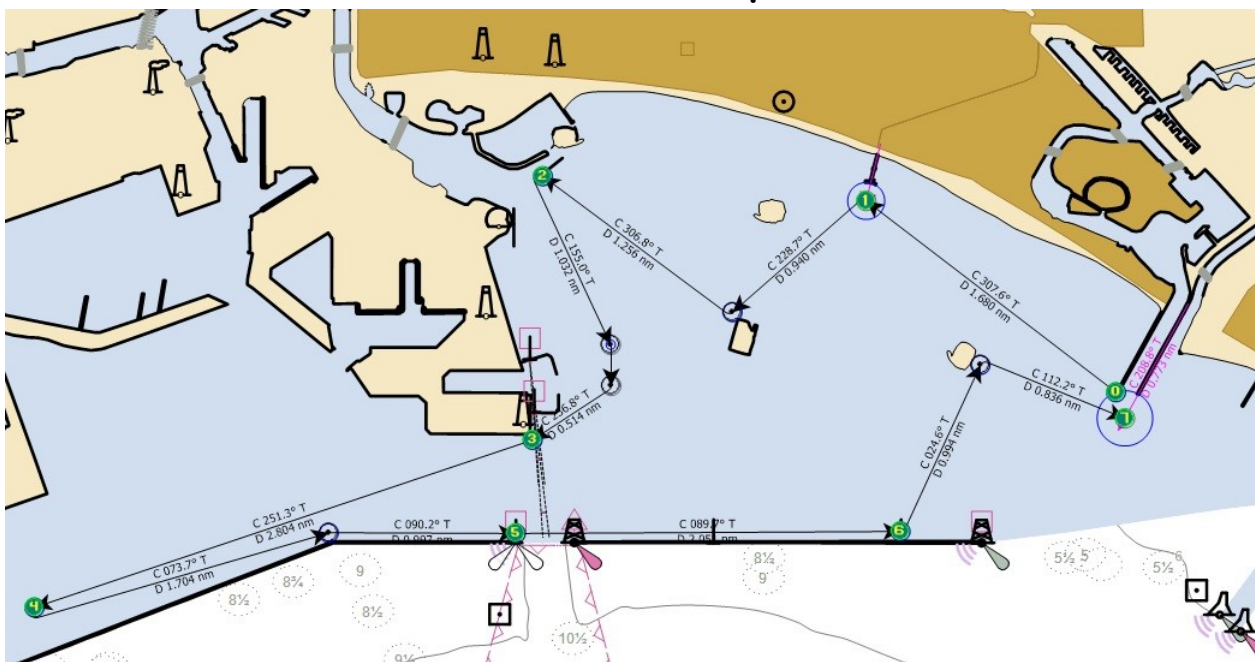
A special feature of the LBYC Season Opener Predicted Log Regatta is the provision for Easy-Entry level predicted log skippers to participate without the need to run a measured mile or to prepare and submit a predicted log! The course is just fifteen-miles and it's all inside the Long Beach breakwater so you'll be running in sheltered water.

It's simple! All you need to do is attend the March 4 - Friday night LBYC Skipper's Meeting at 6:30 pm to have a starting time assigned. Any questions you have will be answered and they'll even provide an observer if you need one. Saturday morning you'll go to the West Jetty of the marina entrance and start at your assigned time. Then follow the course shown below and on the back. Simply run the course at the speed you normally cruise as your observer records the time when you pass the control points on the Actual Log. You can use the speed readout on your GPS to adjust your throttle to the speed you choose to run at the Skipper's meeting.

After your Log is turned in, the Committee will use the speed you choose to prepare a prediction for your boat. Then they'll compare that prediction with your actual times to figure your score.

It's that easy - Come on out and join in the fun!

### The 2016 LBYC Season Opener Course



## Course Directions for 2016 LBYC Season Opener

CP/WP	Description	Pass/Yards	Steer ° M	Latitude	Longitude
Start	West Alamitos Bay Jetty	S 100	296	33°44.197'	118°07.361'
CP 1	Belmont Pier	S 200	217	33°45.222'	118°08.962'
WP1	Island Freeman NW Corner	P/100	295	33°44.626'	118°09.819'
CP2	Shoreline Breakwater SW	S/100	143	33°45.354'	118°11.035'
WP2	Buoy R2	S/50	168	33°44.452'	118°10.600'
WP3	Pier J Range Lights	Range	225	33°44.232'	118°10.597'
CP3	Radar Tower	S/100	239	33°43.943'	118°11.100'
CP4	Pier 400 Light B	S/100	062	33°43.045'	118°14.294'
WP4	Corner Middle Breakwater	S/100	078	33°43.444'	118°12.407'
CP5	Long Beach Light	S/100	078	33°43.441'	118°11.208'
CP6	East Measured Mile Mkrs	S/100	012	33°43.443'	118°08.740'
WP5	Island Chaffee East	P/100	100	33°44.344'	118°08.230'
Finish	East Alamitos Bay Jetty	P/300		33°44.058'	118°07.303'

# RESERVATIONS FOR THE 2016 LBYC SEASON OPENER

*MAIL TO ARRIVE NO LATER THAN March 1, 2016*

Name: \_\_\_\_\_

Address: \_\_\_\_\_

City: \_\_\_\_\_ State: \_\_\_\_\_ Zip: \_\_\_\_\_

Phone: \_\_\_\_\_ Yacht Club: \_\_\_\_\_

Boat Name: \_\_\_\_\_

Length: \_\_\_\_\_ ft. Beam: \_\_\_\_\_ ft.

- Enter my vessel in the 2016 Season Opener Cruiser Navigation Regatta.
- Submit my request for berthing on Friday \_\_\_\_ Saturday \_\_\_\_ night.  
If arriving on Friday, my approximate ETA will be: \_\_\_\_\_.
- Make dinner reservations for Friday night for \_\_\_\_ persons for open seating, after the skippers meeting.
- Please reserve \_\_\_\_ places for the Trophy Awards Dinner on Saturday evening. (Customary attire – blazers and ties.)
- Check enclosed (\$40 each) payable to LBYC. Note: Dinner cost will be \$45 for reservations received after March 1.

Questions: Call Bobby Frazier at (H) 562-439-0618, (W) 562-594-9716

Mail to: Bobby Frazier  
24 The Colonnade  
Long Beach, CA 90803

After deadline? Call (W) 562-254-1634, or [bobbyfrazier@verizon.net](mailto:bobbyfrazier@verizon.net)